

<http://WAXI2.ORG> ←

PDFs of talks and posters (in 2 weeks)

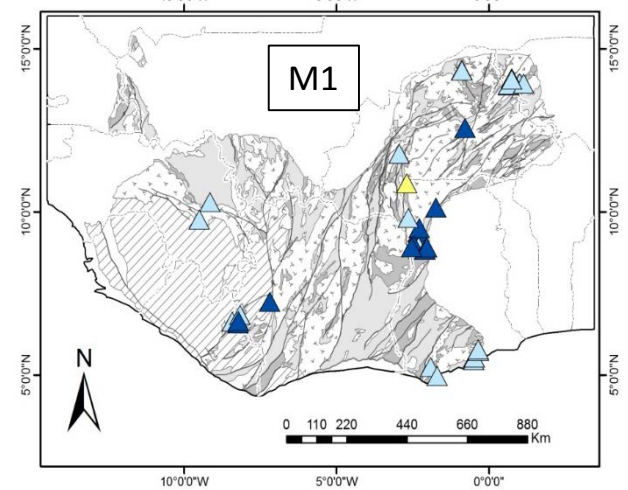
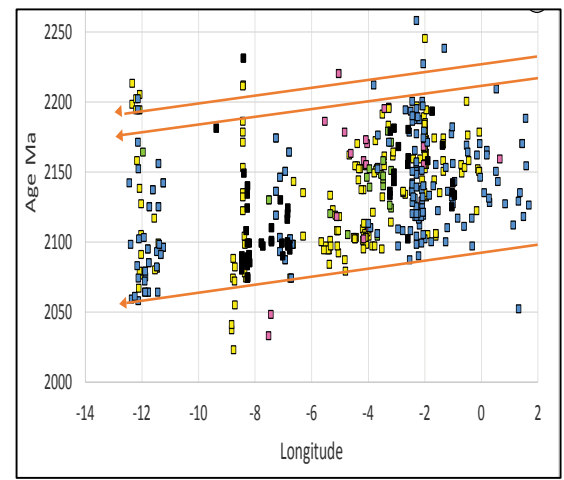
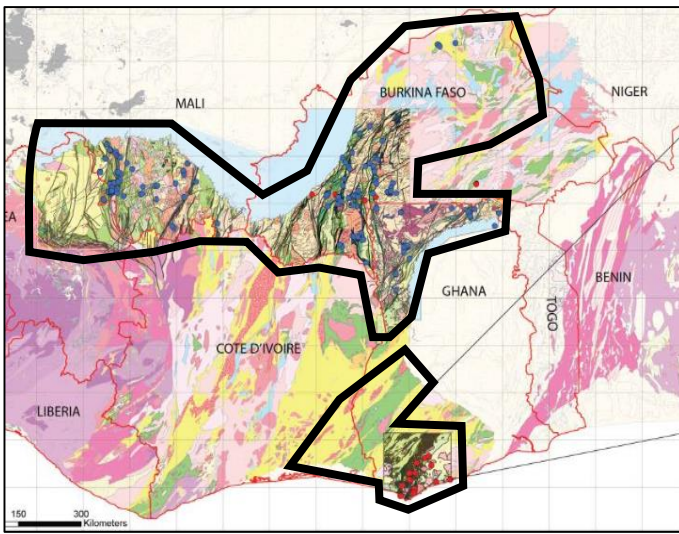
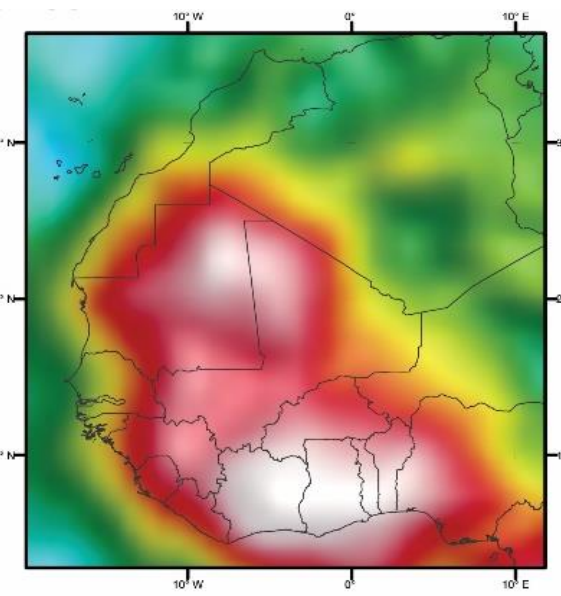
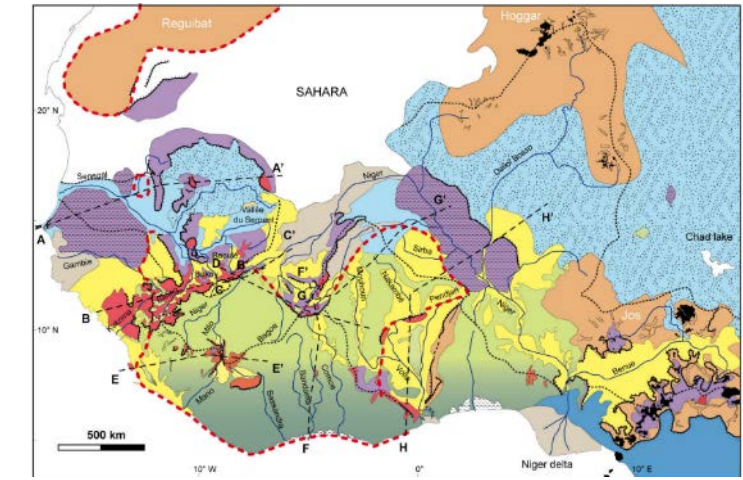
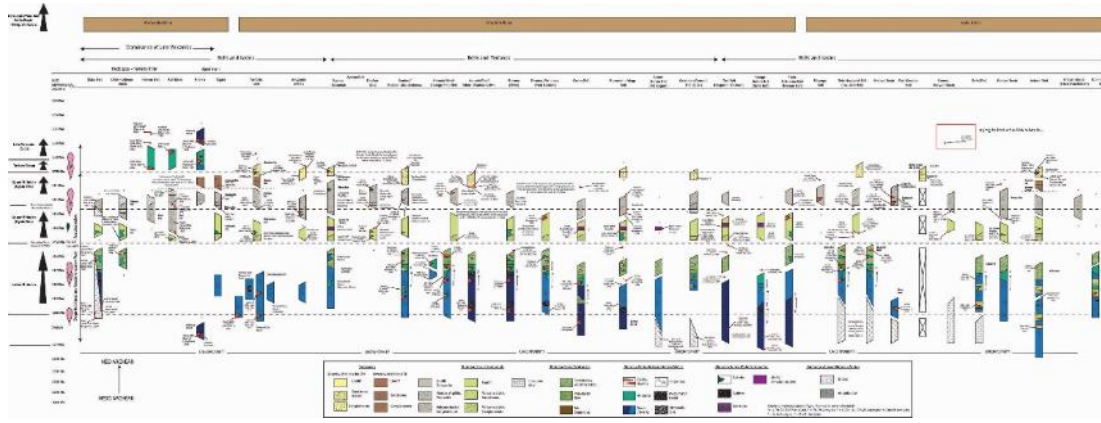
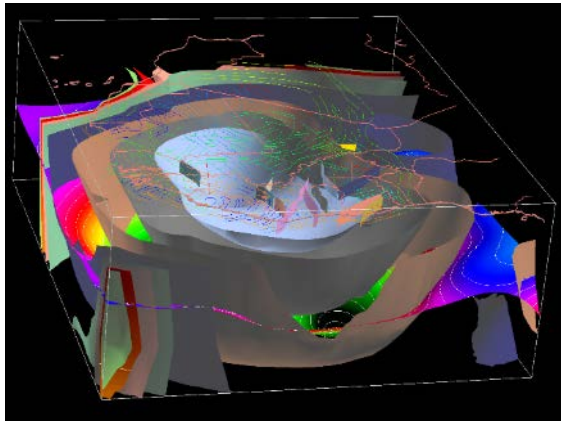


Prince Amponsah	Villa Villa Ramos	Stephane Perrrouty
Dan Apau	Eric Gloaguen	Peters
Emmanuel Arhin	Thomas Fullgraf	Jean-Charles Poilvet
Luis Avila	Mark Jessell	Oumar Sangare
Emmanuel Baah-Danso	Lenka Baratoux	Saga Sawadogo
Sylvain Block	Martin Lompo	Luc Siebenaller
Xiaojun Feng	Seta Naba	Dave Stevenson
Amara Fofana	Kim Ncube-Hein	Noziwe Simoko
Denis Fougrouse	Anne-Sylvie André	Abraham Traore
Todani Funyufunyu	Olivier Bruguier	Adama Yameogo
Matt Hill	Cam Mccuaig	James Davis
Nicolas Kagambega	John Miller	Marco Fiorentini
Kinane	Bohdan Kribek	Marc Barley
Elodie Le Mignot	Alan Jones	Elena Belousova
Erwann Lebrunn	Stefano Salvi	Asinne Tshibubudze
Ben Li	Didier Beziat	Woolfe Woolfe
Jelena Markov	Luc Siebenaller	Yossi
Irvin Matsheka	Leon Bagas	Tony Kemp
Anathase Nare	Nuru Said	Stanislav Ulrich

Successful minerals exploration depends in part on our understanding of the spatial and temporal variations in :

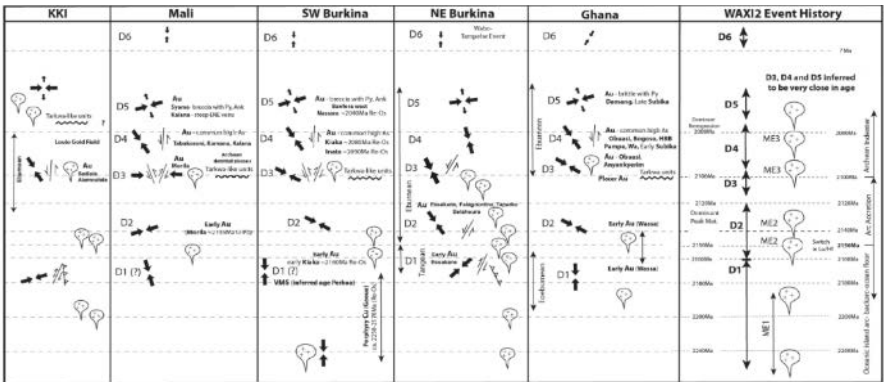
- Regolith and Landforms
- Stratigraphy
- Metamorphism
- Deformation
- Geochemistry
- Mineralisation





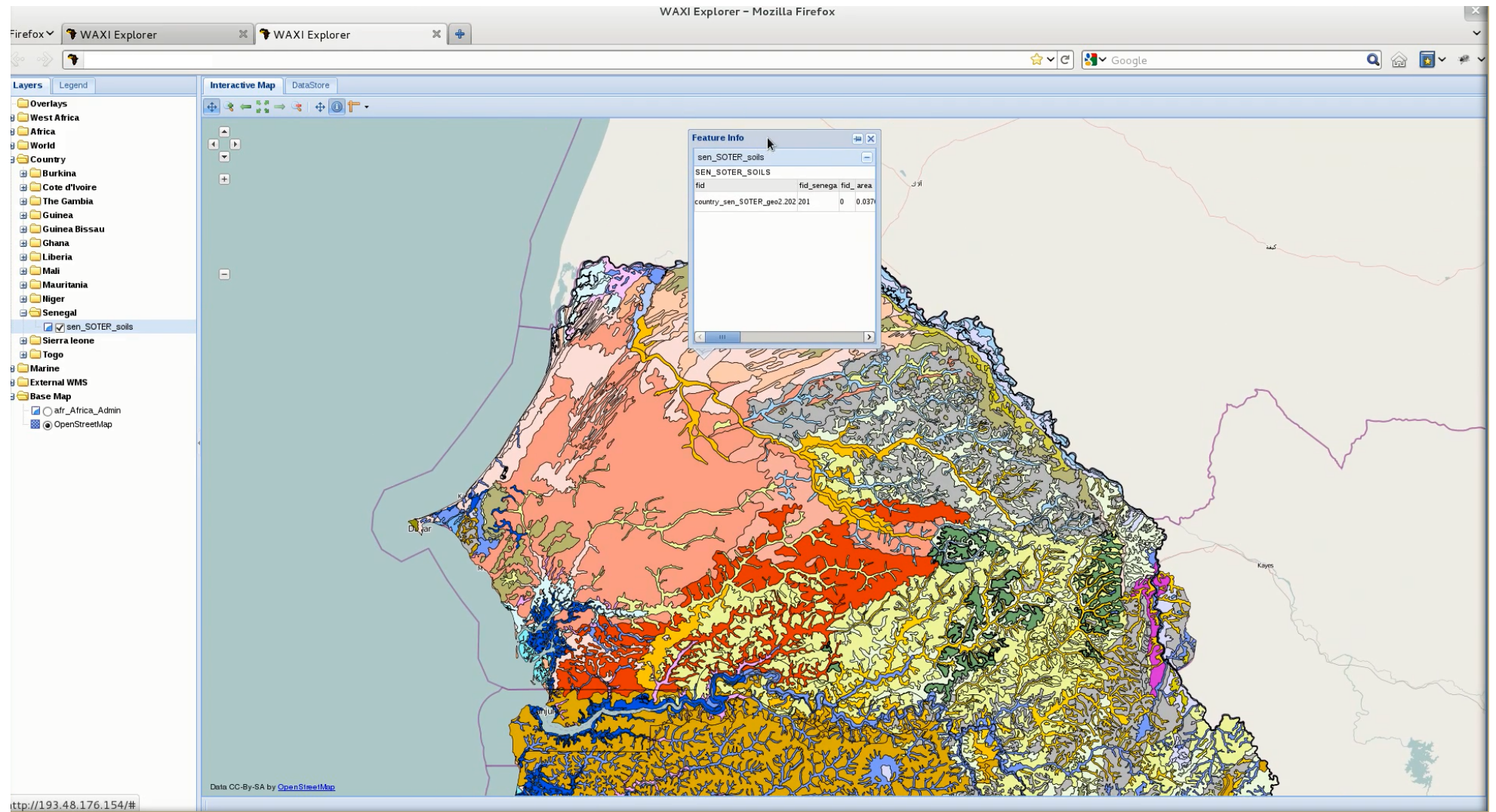
Type	Company	Deposit name	Host rock	metam	mode of occurrence	Reformation	specific alteration	subhedral	secondary	Au association	age T	in-situ dating
Mineral type	Various	Various	Various	Various	Various	Various	Various	Various	Various	Various	Various	Various
Parent rock	Various	Various	Various	Various	Various	Various	Various	Various	Various	Various	Various	Various
Alteration type	Various	Various	Various	Various	Various	Various	Various	Various	Various	Various	Various	Various
Deposit type	Various	Various	Various	Various	Various	Various	Various	Various	Various	Various	Various	Various
Basin type	Various	Various	Various	Various	Various	Various	Various	Various	Various	Various	Various	Various
Deposit type	Various	Various	Various	Various	Various	Various	Various	Various	Various	Various	Various	Various

Kinisoro Deposit	Signiri Deposit	Sikoroze Shear Zone (SSZ)	Kalana Shear Fault (KSF)	Kalana Deposit	Banfing Shear Zone (BSZ)	Granitoids adjacent to Banfing Shear Zone (BFZ)	Morila Deposit	Syama Belt (Tab, Tellem, Qtz Ridge Deposits)	Syama Deposit	Banfora Deposit	Event History
		Steep SNE trending veins	Sinistral overprint of SSZ	Steep SNE trending veins	Oblique foliation & sinistral faults	ENE trending fabrics (flattened envelopes)?	Veins with visible Au in Graurodicite	Arenaceous with Py		Breccias with E trending veins	D5 D4 D3 D2 D1
		Formation of Dextral SSZ	Formation of Dextral KSF	Formation of Dextral BSZ	N to NW-trending fabrics; flattened envelopes, magmatic foliation BUT NE-trending fabrics in BSZ.	ENE trending fabrics (flattened envelopes)?	Downing and Au remobilization (intra to super-genetic)	Quartz veins (with Py?)		Shearing main bands form	D5 D4 D3 D2 D1
		Formation of NW-trending fabrics?	Formation of NW-trending fabrics?	Formation of NW-trending fabrics?	Basal to intermediate (late) intrusions with well foliated margins?	Basal to intermediate (late) intrusions with well foliated margins?	Formation of NW-trending D1 fabrics. Only Au?	Formation of Franciscan Gneiss (early belt)		Folding of stratigraphic	D5 D4 D3 D2 D1



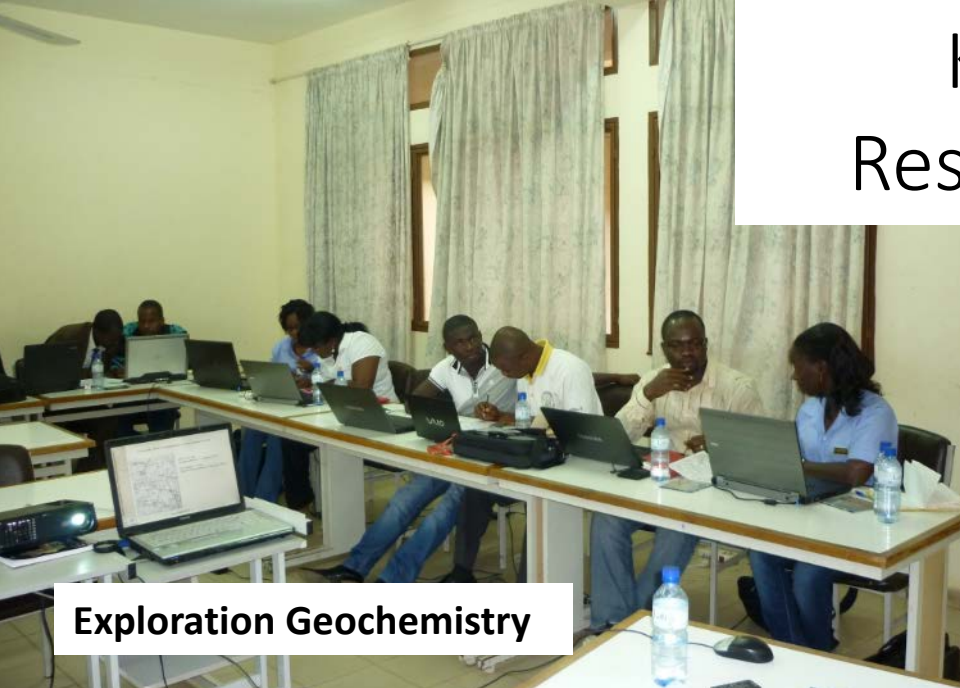


# Data Delivery: WAXI GIS





# Knowledge Delivery: Research Training Courses



**Exploration Geochemistry**



**Applied Structural Geology in Mineral  
Exploration and Mining**

**Annually  
3-4 WAXI Courses**

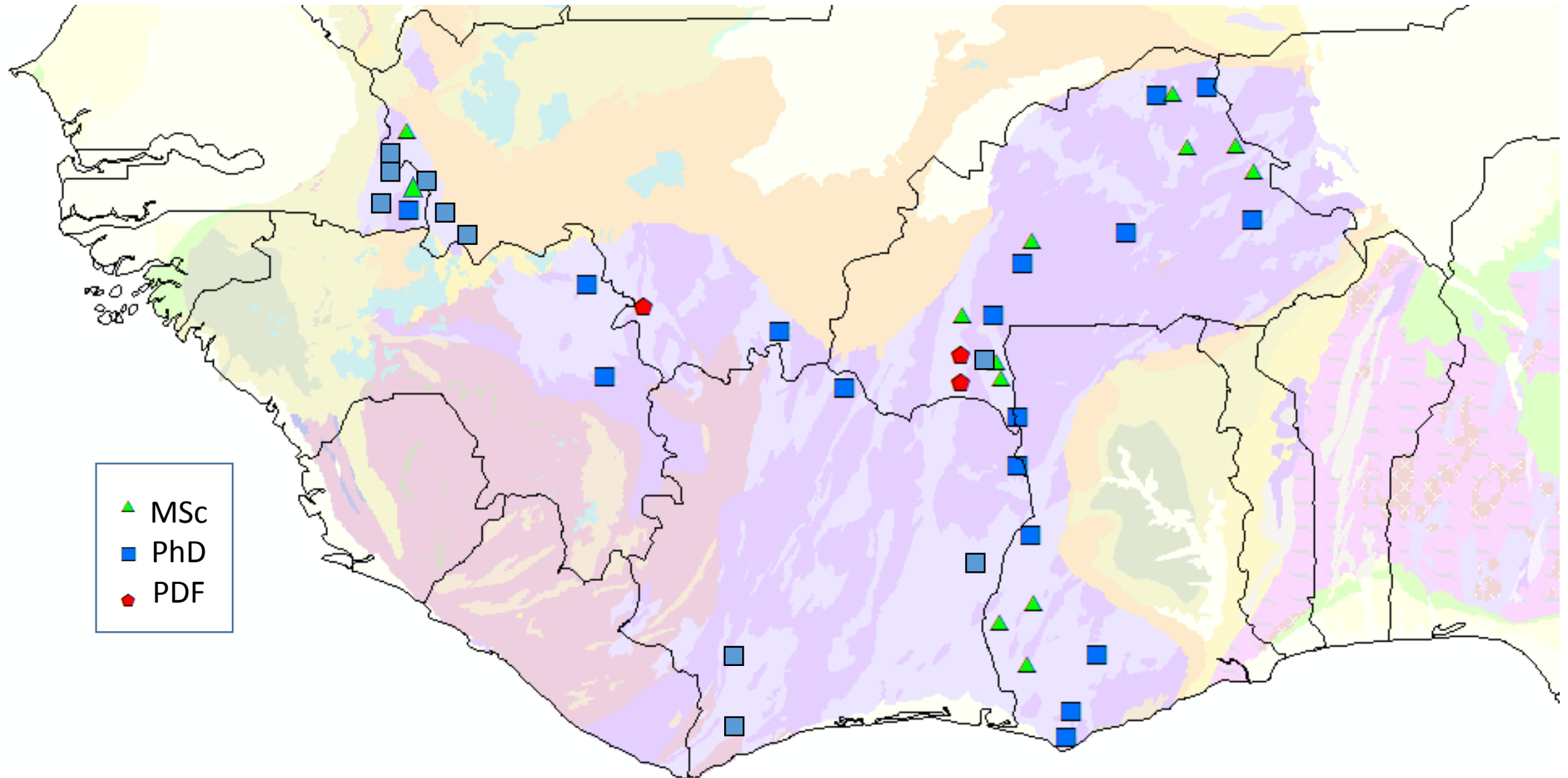


**Field Structural Mapping**



**Structural Geophysics**

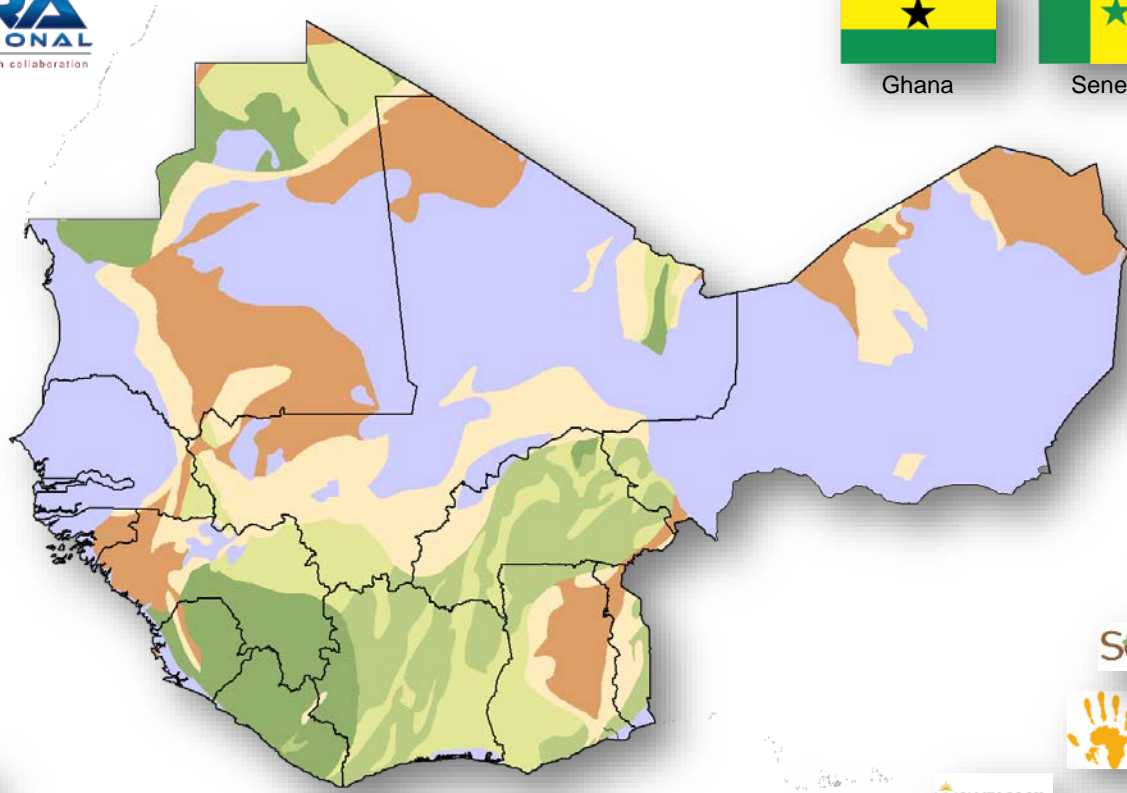
# A new pool of qualified researchers applied to mineral exploration in West Africa.





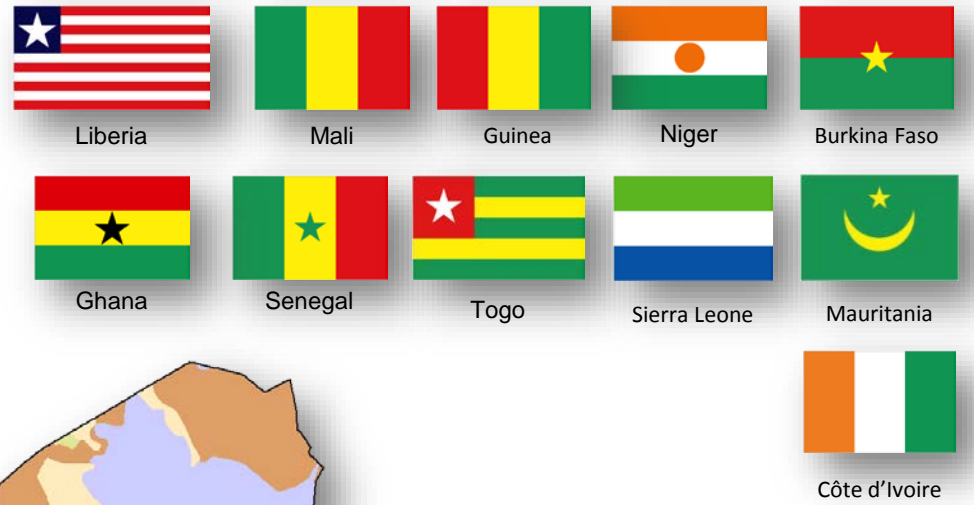
**WAXI - West African Exploration Initiative**  
**IXOA - L'Initiative d'Exploration Ouest Africaine**

**Project Broker & Coordinator**



**WAXI 1**  
**WAXI 2**  
**WAXI 3**

**11 Sponsors in kind (Geological Surveys)**



**22 Research and Capacity Building Partners**



**35 Sponsors**







KING FAHD PALACE  
HOTEL

PALAIS DES CONGRES



KING FAHD PALACE  
HOTEL



**The Metallogenesis, Tectonics & Surface Evolution  
of the West African Craton**

**Conference - 17 et 18 September 2015 - Dakar , Senegal**



*Merci pour votre attention*





